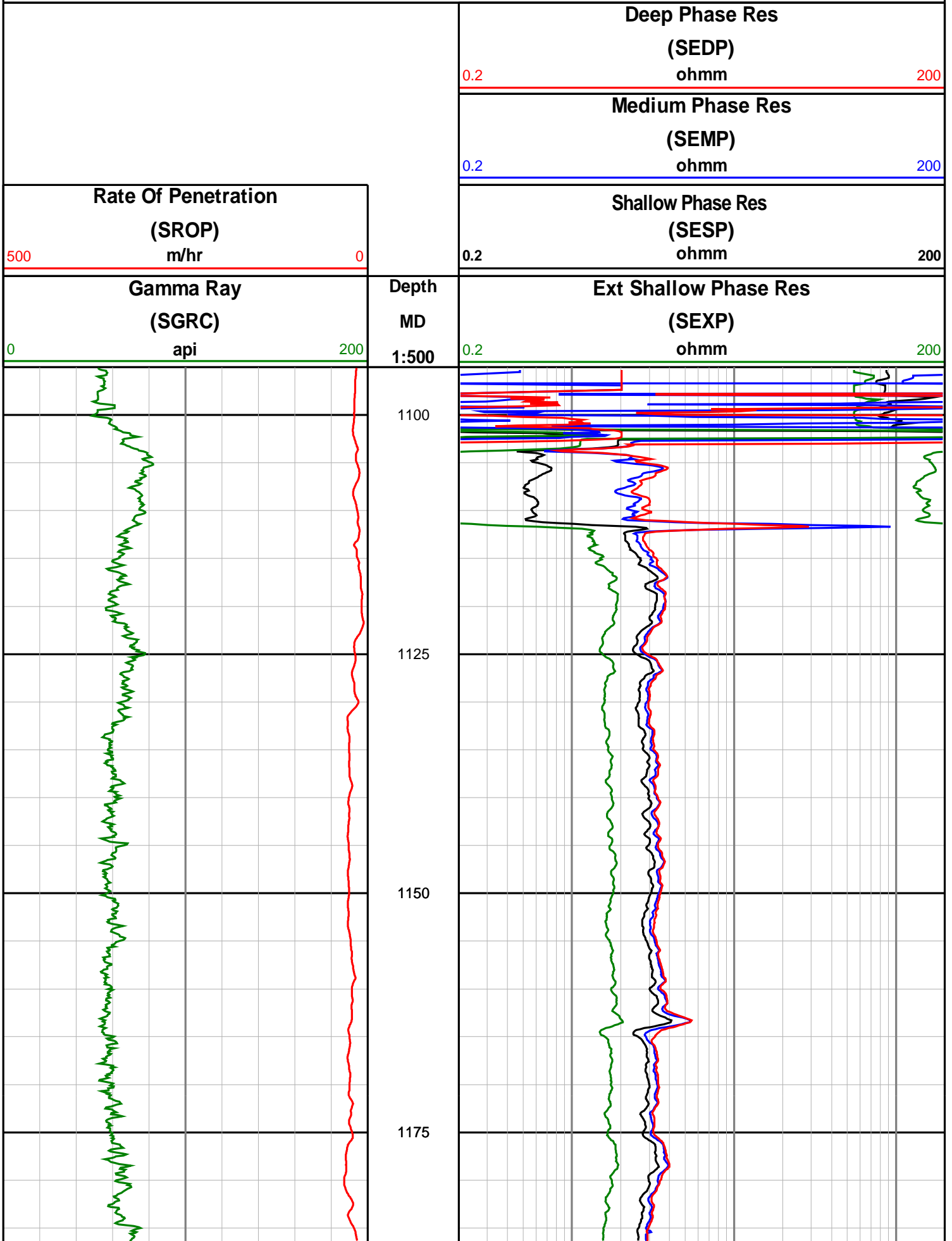


# Anzon Australia Ltd

## Basker-3

Recorded LWD Log (Permanent Datum - LAT)





1200

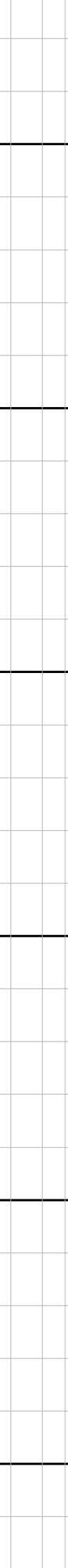
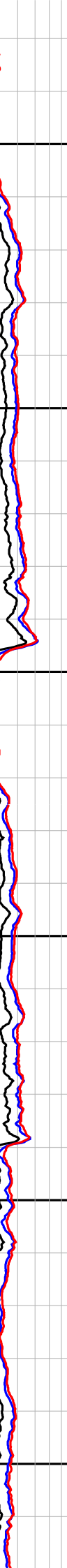
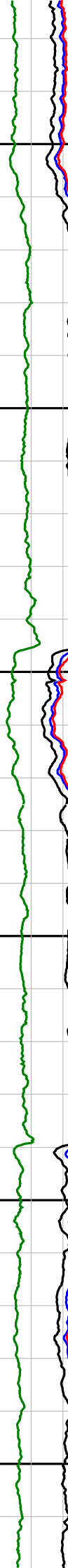
1225

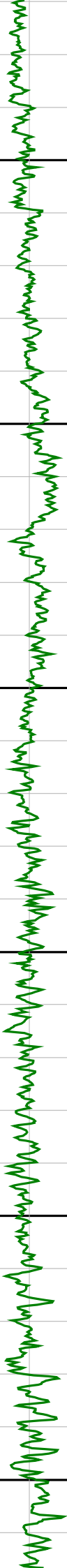
1250

1275

1300

1325





1350

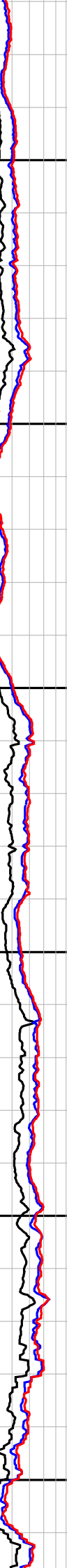
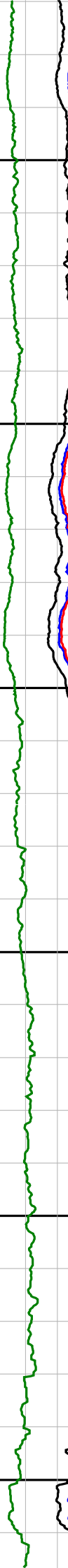
1375

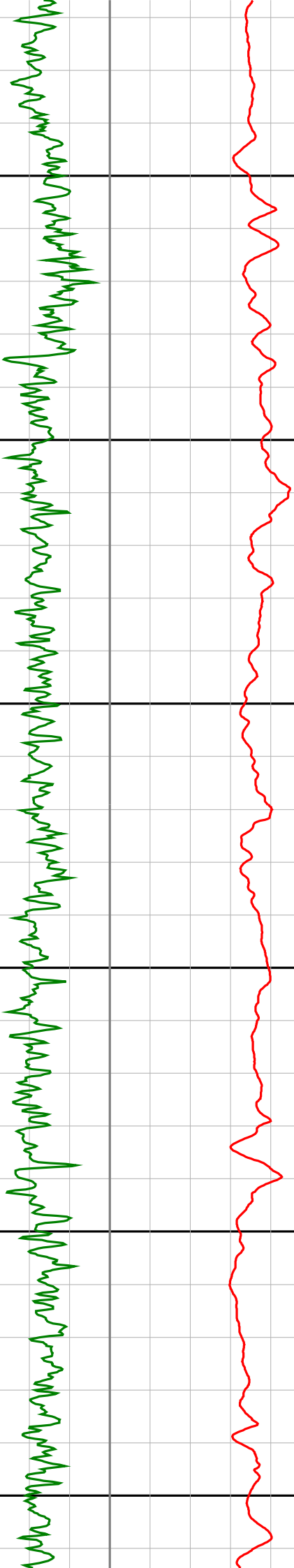
1400

1425

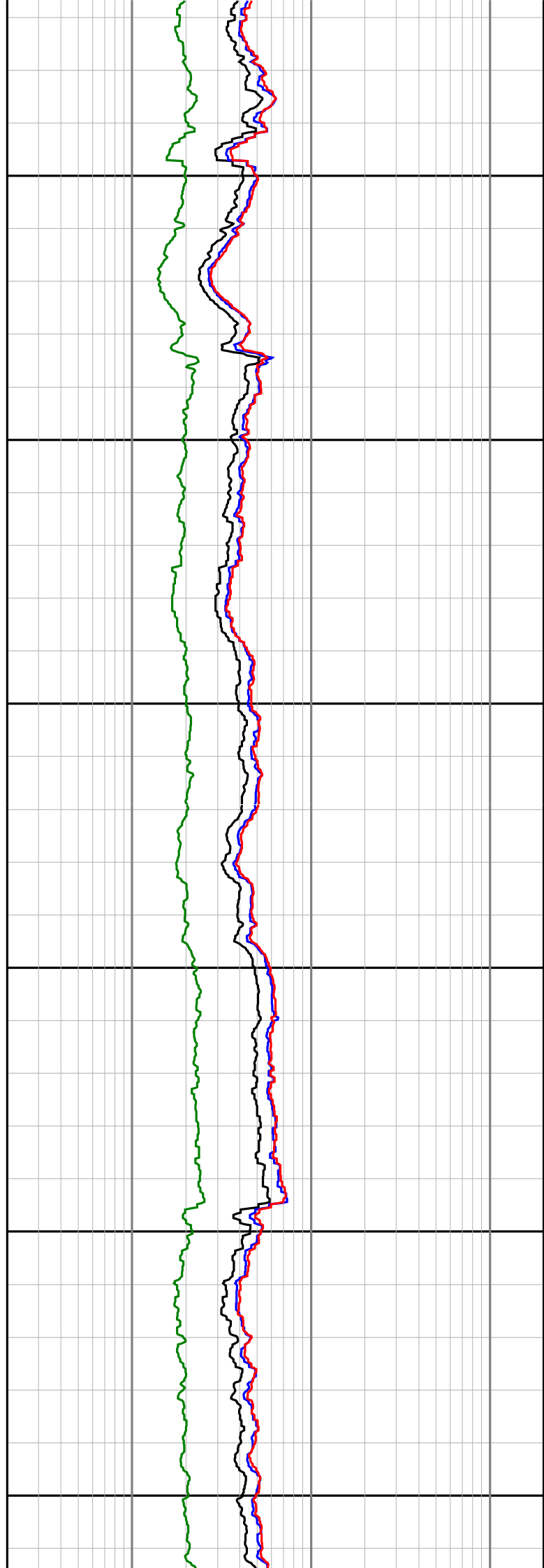
1450

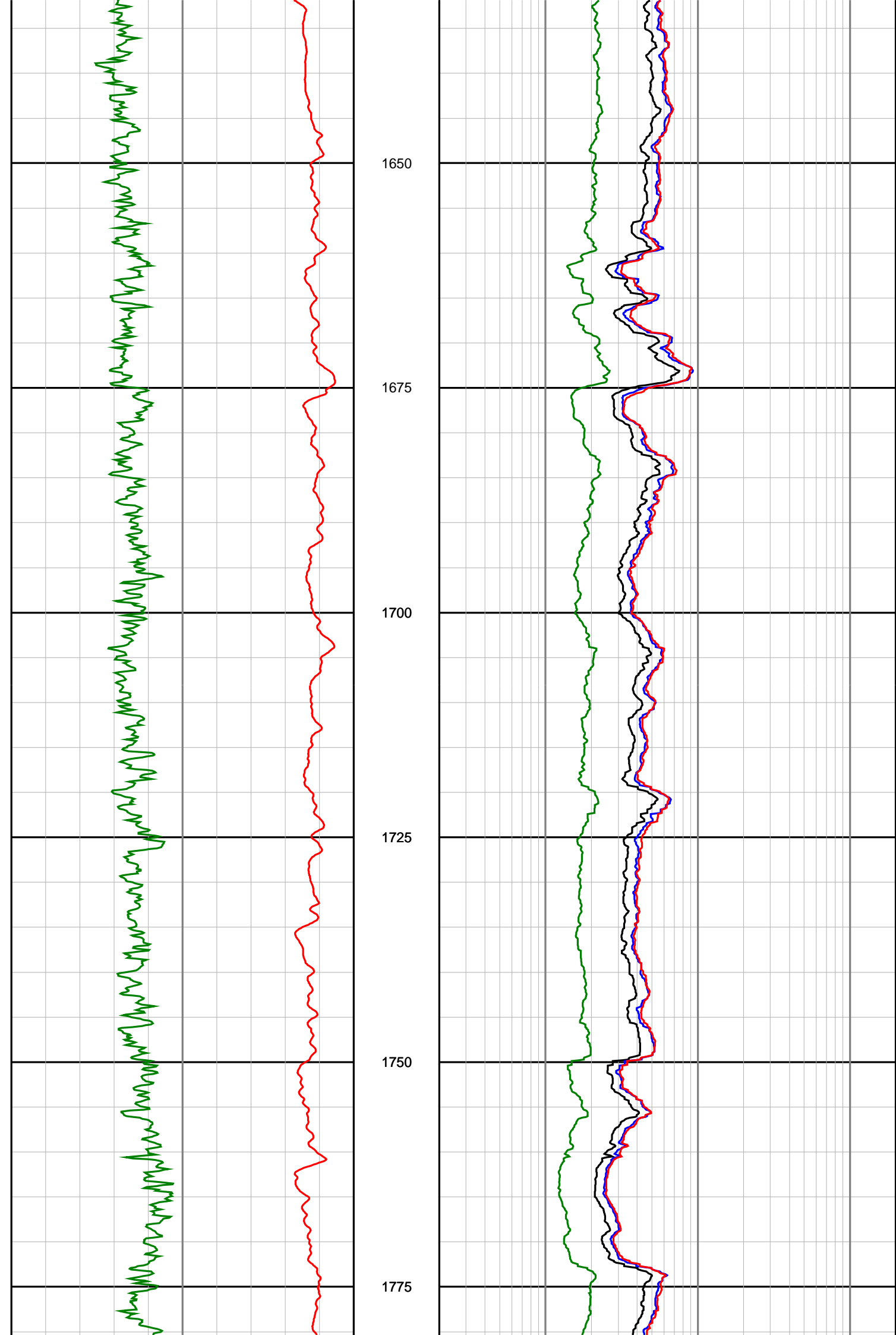
1475

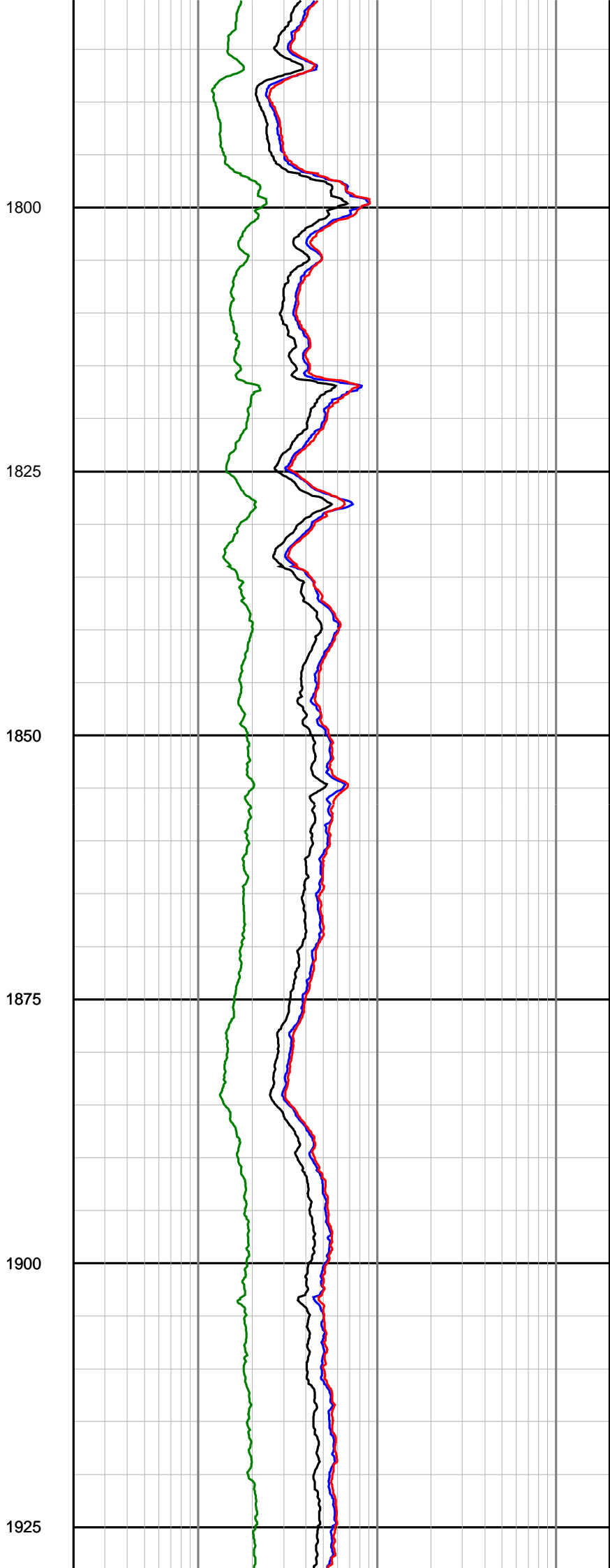
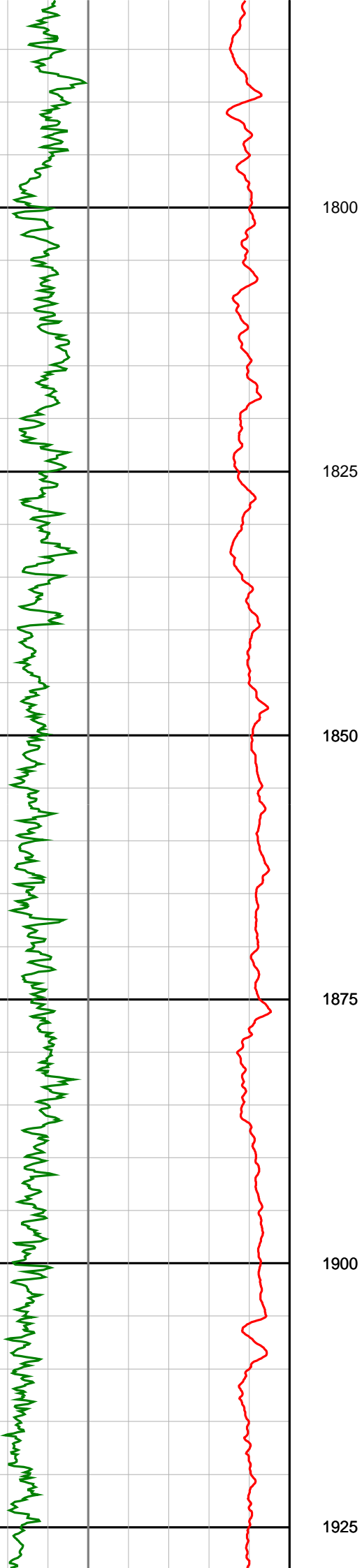


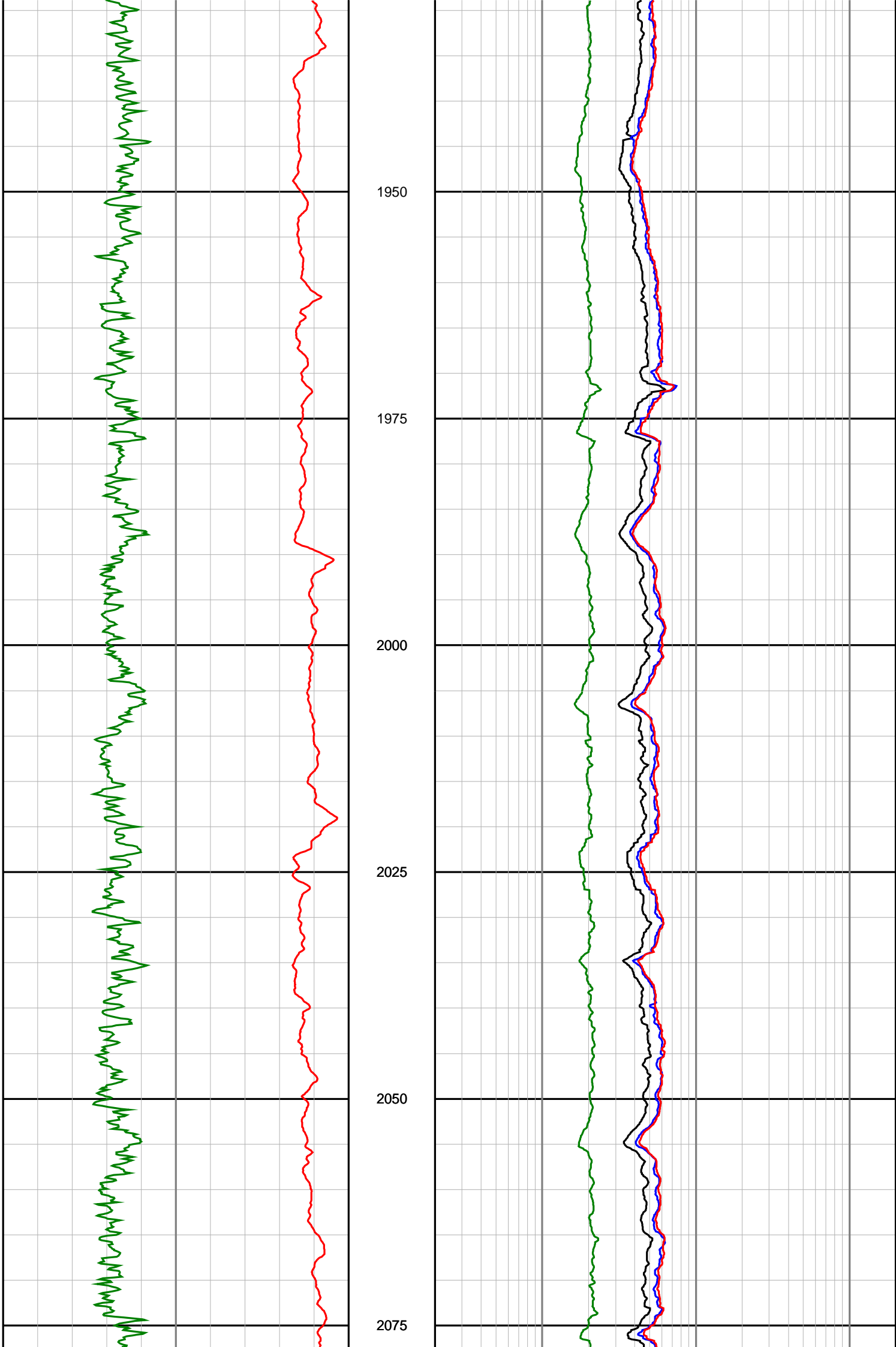


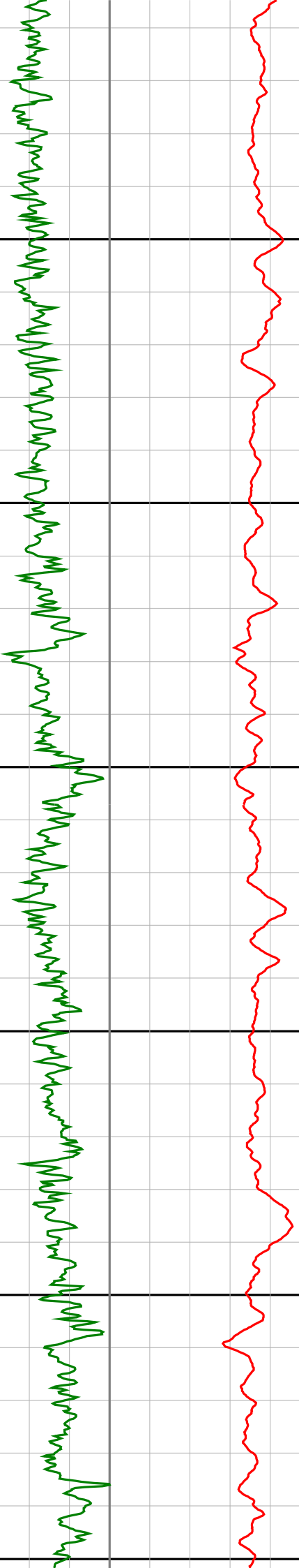
1500  
1525  
1550  
1575  
1600  
1625











2100

2125

2150

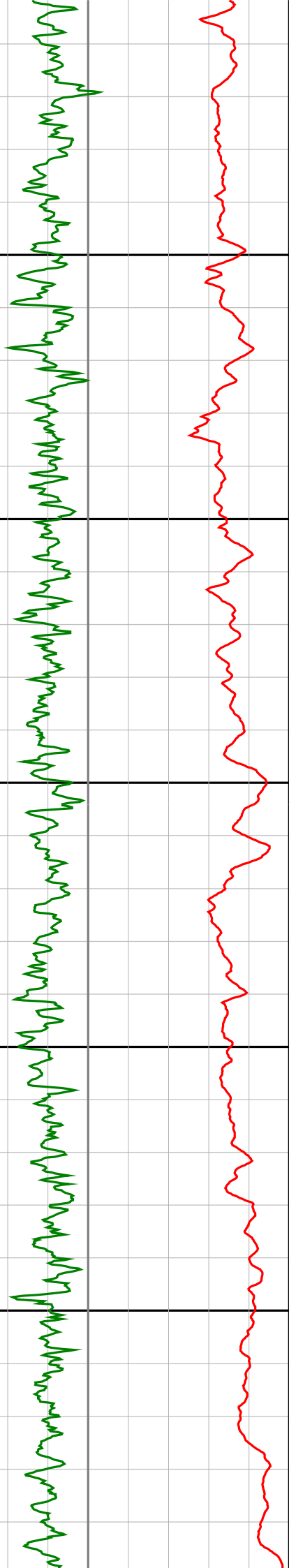
2175

2200

2225







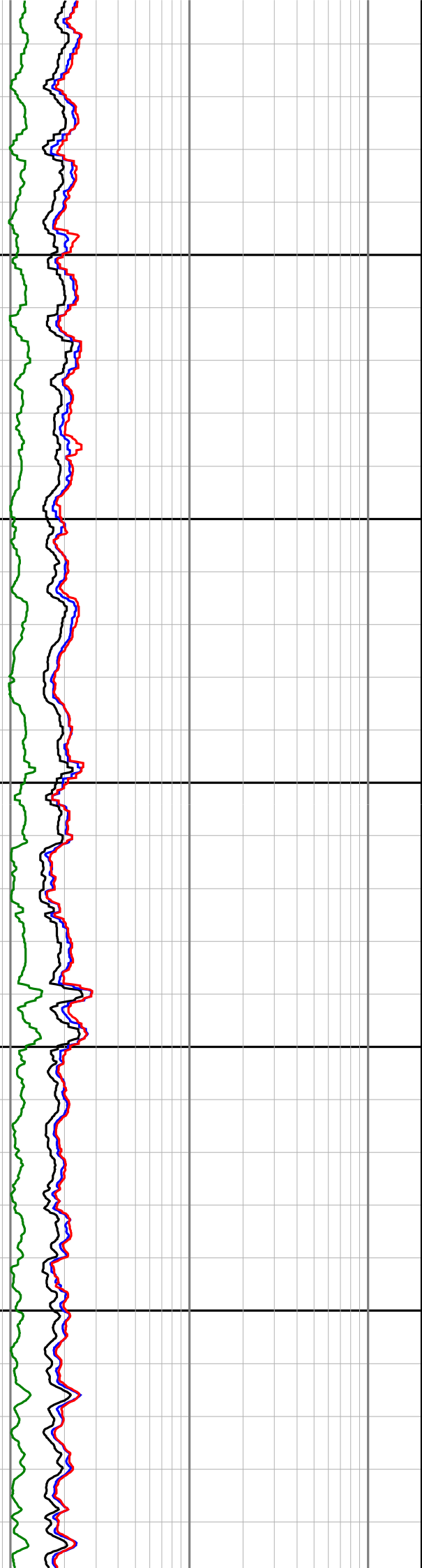
2250

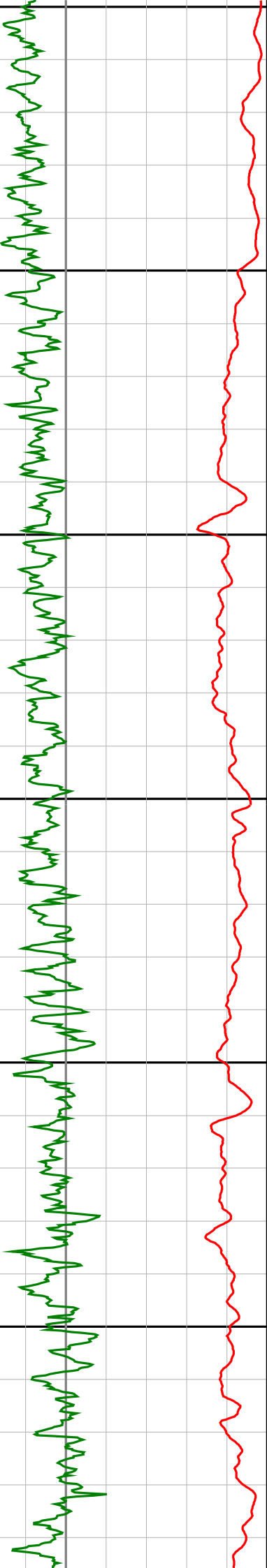
2275

2300

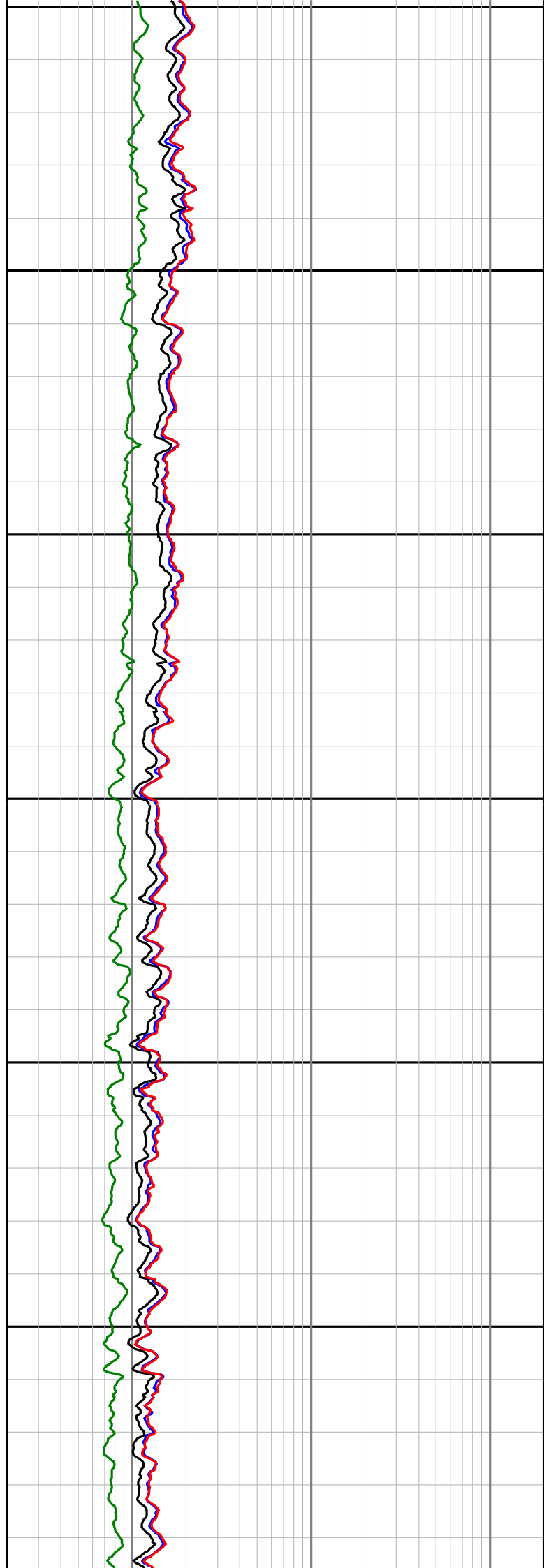
2325

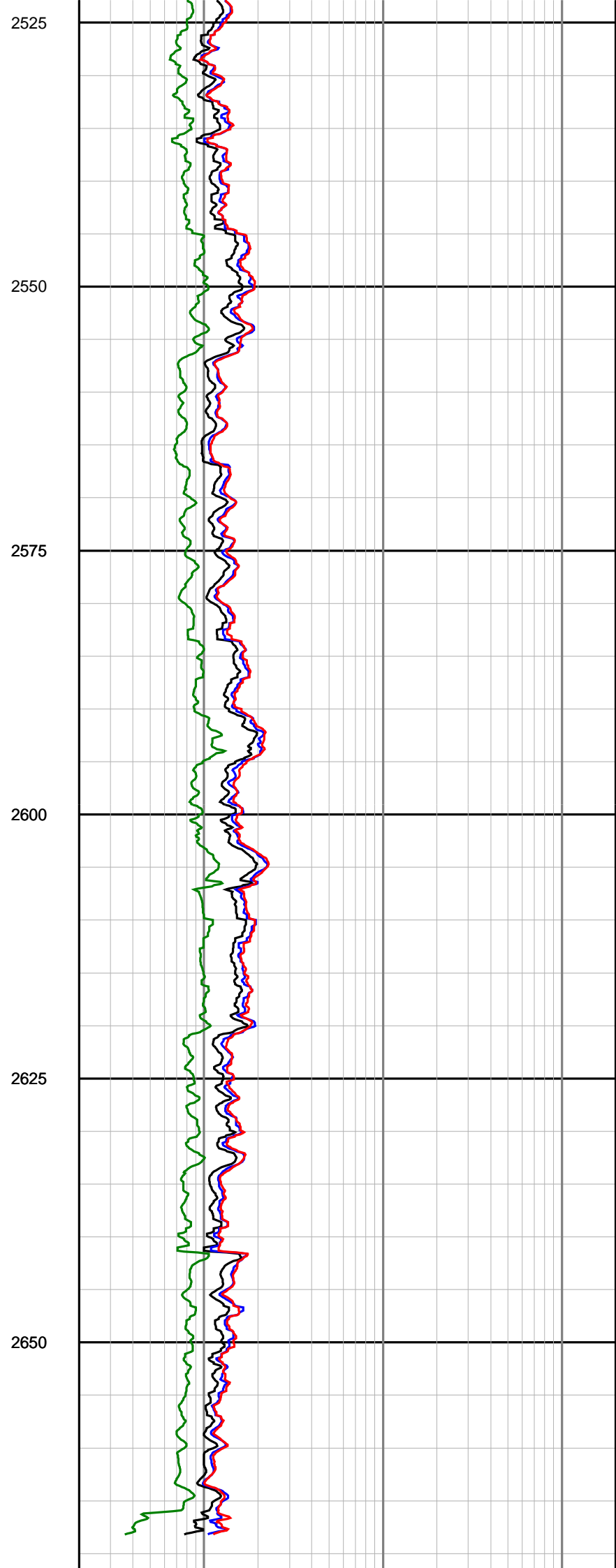
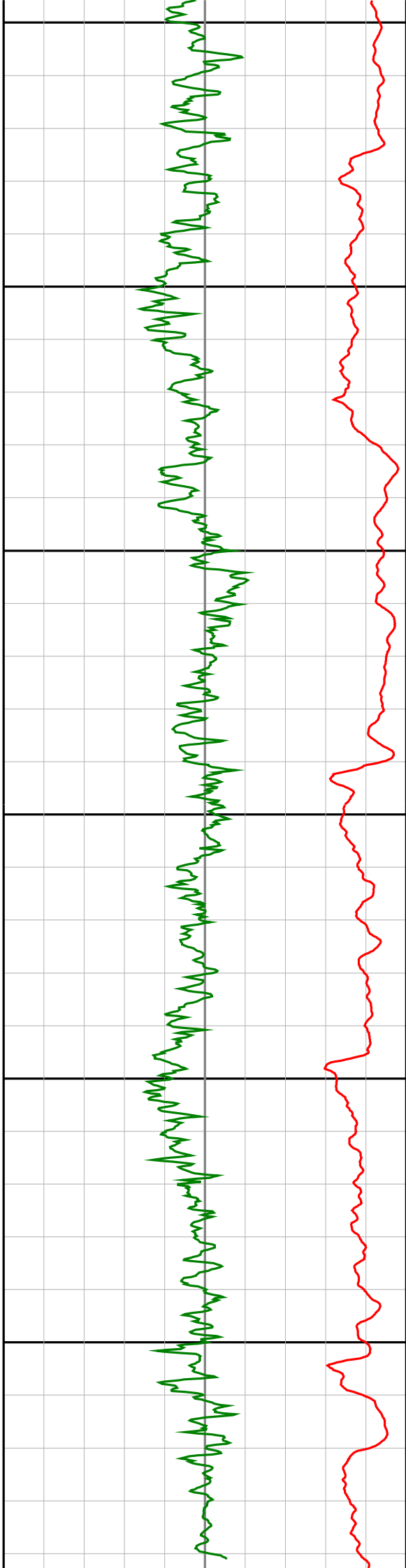
2350

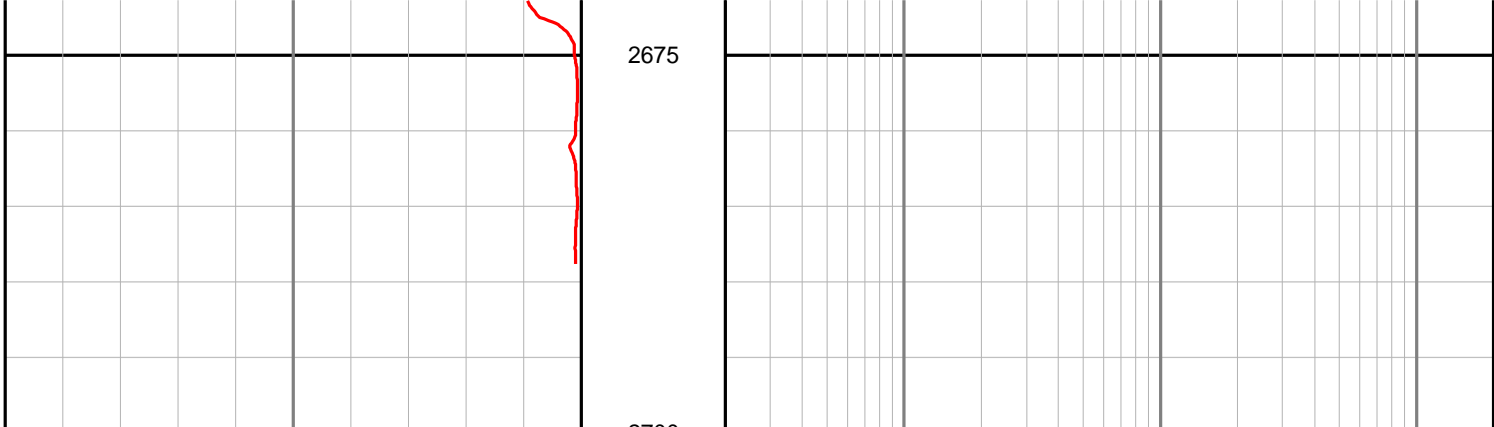




2375  
2400  
2425  
2450  
2475  
2500







2675

<p><b>Gamma Ray (SGRC)</b> api</p> <p>0 <span style="float: right;">200</span></p>	<p>Depth MD 1:500</p>	<p><b>Ext Shallow Phase Res (SEXP)</b> ohmm</p> <p>0.2 <span style="float: right;">200</span></p>
<p><b>Rate Of Penetration (SROP)</b> m/hr</p> <p>500 <span style="float: right;">0</span></p>		<p><b>Shallow Phase Res (SESP)</b> ohmm</p> <p>0.2 <span style="float: right;">200</span></p>
		<p><b>Medium Phase Res (SEMP)</b> ohmm</p> <p>0.2 <span style="float: right;">200</span></p>
		<p><b>Deep Phase Res (SEDP)</b> ohmm</p> <p>0.2 <span style="float: right;">200</span></p>